

SECTION 22, T.7N., R.1E., S.L.B. & M.

IN WEBER COUNTY

SCALE 1" = 400'

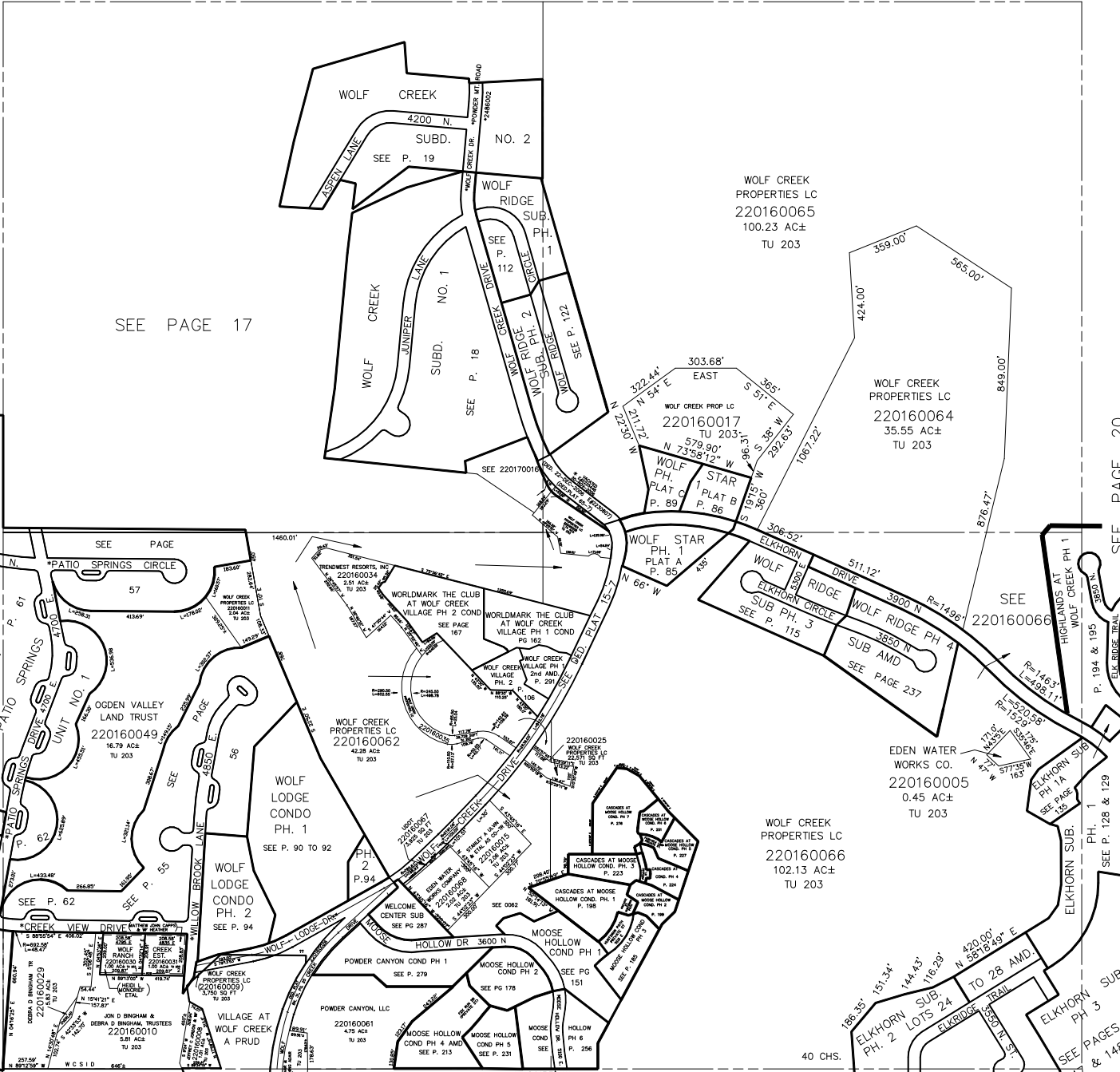
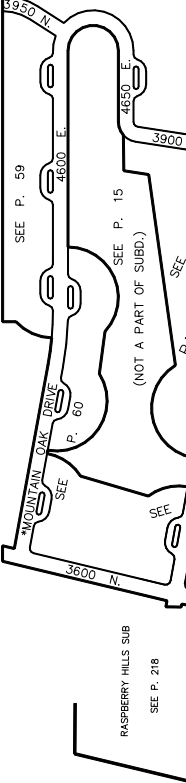
TAXING UNIT: 203

SEE PAGE 6

SEE PAGE 15

SEE PAGE 17

SEE P. 58



SEE PAGE 20

SEE PAGE 130

SEE PAGES 147 & 148

* STREET NAME CHANGE
19-JAN-95 1744-1014
E #1329313

** STREET NAME CHANGE
ORDINANCE NO 2009-08
E #2396736

SEE PAGE 21